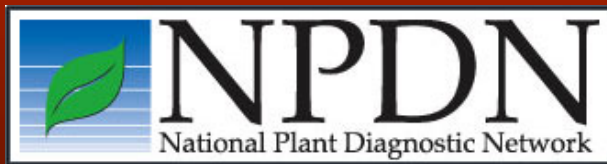


An Overview of the Purpose and Recent Accomplishments of the National Database Subcommittee

Karen Snover-Clift

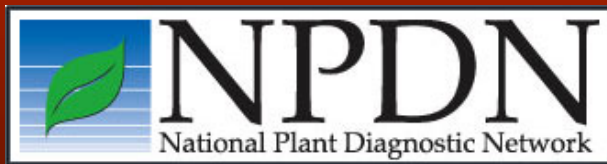
Associate Director, NEPDN

Director, Plant Disease Diagnostic Clinic, Cornell University



NPDN Diagnostics Subcommittee Goal

- To create guidelines and review documents to instruct NPDN users how to properly use the National Repository system. Also to review existing data fields to determine if they meet current needs.



Membership

- The Subcommittee was created at the 2nd IT-Diagnosticians Meeting, held near Purdue, IN on January 9-10, 2006.
 - Karen L. Snover-Clift, Chairman, Cornell University
 - David Barber, University of Georgia
 - Andrew Coggeshall, Univ. of California at Davis
 - Nancy Gregory, University of Delaware
 - Will Lanier, Montana State University
 - Mark Mayfield, Kansas State University
 - Karen Rane, Purdue University
 - Virginia Russell, CERIS-National Repository, Purdue University
 - Carla Thomas, Univ. of California at Davis
 - Timothy Tidwell, CDFA
 - Anne Vitoreli, University of Florida

New Level of Confidence Terms

Confirmed

The diagnosis was derived using approved molecular technologies, serological testing and/or morphological observations which allowed for the **confirmation** of the organism to Genus, species and/or race or pathovar level.

Not Detected

The sample was submitted as a suspect sample or as part of survey project. The pathogen was not detected on this sample at this time using approved molecular technologies, serological testing and/or morphological observations.

Suspected

Diagnostic symptoms of the pathogen were present but evidence of the pathogen could not be confirmed at this time. This term may also be used at the species level if confirmations can not be made. This term may also be used with abiotic entries.

Inconclusive

Although a suitable sample was received, a reliable result could not be achieved. For example, the test kit may have not worked correctly and there was no sample material remaining to perform the test again. Or, no DNA was detected in a PCR analysis. Inhibitors may have been present in the sample. A second attempt may have been made with the same results. The only conclusion is to label the sample as inconclusive.



Accomplishments

- Reviewed and recommended changes to the current abiotic EPA pest codes.
- Discussed general questions about how to handle certain situations such as...How do you handle finding an insect when you only identify it to the Family level?
- Created a draft version of the Upload Guidelines.
- Reviewed and recommended changes to the current nematode listing.
- Created a review team to process user change requests.
- Assisted in the 3rd IT-Diagnosticians Meeting in Excelsior Springs, MO.
- Reviewed and recommended changes for the current EPA host codes.

