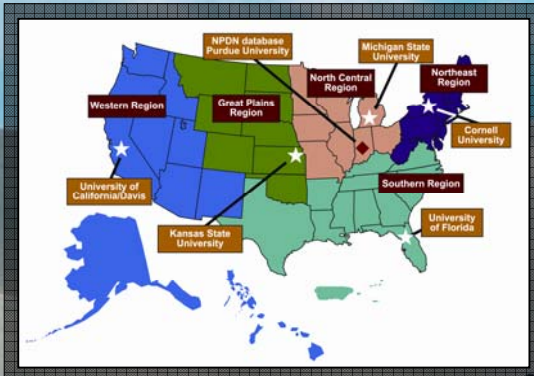




# National Plant Diagnostic Network

## \*\* Governance \*\*



What is worth doing, is worth doing well.

Developing a governance framework that:

- ensures sustained and efficient operations,
- establishes a mechanism for decision making, and
- provides for the orderly transfer of leadership

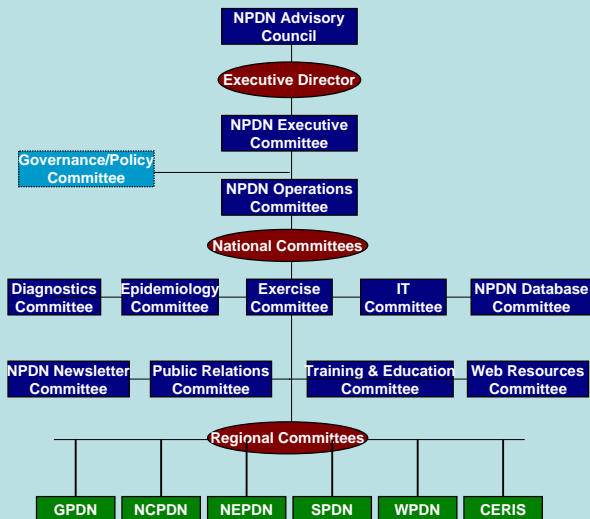
is among the most important responsibilities of any organization.

NPDN has addressed that challenge. An NPDN governance document is near completion.

The National Plant Diagnostic Network is a model for effective cooperation among land grant universities, local, state, and federal agencies, and the industries that support our plant systems. NPDN is vital to the security of our national plant resources.

*NPDN Governance  
Committee*

### NPDN Governance Structure



## Pathway to Governance

- NPDN Governance Committee has members from the NPDN Operations Committee
- Governance is implemented through a national and regional committee structure
- National and regional committees have defined authorities and responsibilities
- An established communications structure ensures the transfer of information
- An NPDN governance document has been drafted and a ratification plan is under development

## NPDN Executive Committee

- |                     |        |            |
|---------------------|--------|------------|
| • Jim Stack         | GPDN   | Chair      |
| • Ray Hammerschmidt | NCPDN  | vice Chair |
| • George Hudler     | NEPDN  |            |
| • Bob McGovern      | SPDN   |            |
| • Rick Bostock      | WPDN   |            |
| • Eileen Luke       | CERIS  |            |
| • Kitty Cardwell    | CSREES |            |
| • Marty Draper      | CSREES |            |