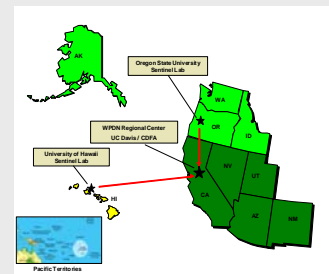


Western Plant Diagnostic Network

Richard Bostock - Regional Director, *Carla Thomas* - Deputy Director, *Richard Hoenisch* - Training Coordinator, *Andrew Coggeshall* - IT Coordinator, & *Umesh Kodira* - Branch Chief, Plant Pest Diagnostics Center, CDF

The WPDN's hub laboratory is the California Dept. of Food and Agriculture's Plant Pest Diagnostics Center at Meadowview, south of Sacramento. The region's two sentinel labs are at the University of Hawaii, Manoa, for the Pacific area, and at Oregon State University in Corvallis, for the Northwest. The WPDN supports the Land Grant University labs and the labs of the departments of agriculture in the other states. The WPDN is fully integrated and interconnected with the distance diagnosis technology.



Training and Education

Since March, 2004, the WPDN has trained 2,256 First Detectors in ten western states and several Pacific island territories. These include county agricultural commissioners, inspectors, growers, master gardeners, and other crop and plant health professionals. The classroom education consists of three modules: NPDP Mission, High Risk Pests, and Secure Sample Submission. The First Detectors continue their education by monthly email updates, by accessing resources on the WPDN/NPDP websites, and by participating in ongoing education offered by the WPDN and state agencies. The WPDN updates First Detectors with special pest and disease topics of local and national concern. These have included Sudden Oak Death, Soybean Rust, Pink Hibiscus Mealybug, Citrus Greening or Huanglongbing, and Asian Longhorned Beetle.



Training First Detectors in NV



Alaska First Detector, First Educator, and Distance Diagnostic Training



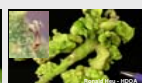
Invasives in the WPDN region



Potato Cyst Nematode



Diaprepes Root Weevil



Erythrina Gall Wasp



Ohia Rust



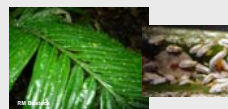
Chrysanthemum White Rust



Gladiolus Rust



Asian Longhorn Beetle



Cycad scale on *Cycas micronesica* in Guam

Invasive species in the Pacific area are a major problem due the huge amount of shipping and air freight in this area. Ohia Rust, Erythrina Gall Wasp, and Cycad Scale have become major pests in the Pacific Islands since 2005. The south and central coasts of California are home to both a large horticultural and agricultural industry. Chrysanthemum White Rust, Gladiolus Rust, and Diaprepes Root Weevil have been detected there and efforts are being made to eradicate them. Potato Cyst Nematode was detected in Idaho in 2006. The USDA and Idaho State Department of Agriculture have teamed up to isolate the outbreaks and eliminate them. Asian Longhorn Beetle has been detected several times on the West Coast and successfully traced forward and eradicated. Survey crews are continuously monitoring for this serious pest of softwood trees.

Hawaii and Guam Conferences



The Guam WPDN Team



Honolulu Conference

Team conferences were held in Guam and Hawaii in December 2006 to address needs relative to handling of high consequence samples and communication paths.



UC Davis Workshop



University of Hawaii Workshop



Workshops. The WPDN organized two Homoptera entomology workshops. One was held at the University of Hawaii, Manoa, on January 24 and 25, 2006. The 17 participants came from California, Nevada, Hawaii, Guam, and Palau to work with mealybug and scale. Another workshop was held at the University of California, Davis, from March 23 - 26, 2006. Twelve invited speakers thoroughly covered the order Hemiptera with the 27 participants from the USDA, university extension and various state departments of agriculture.

Chain of Communication and Custody Exercises



2006 APHIS Full-Scale Citrus Canker Exercise in Texas

The WPDN has national responsibility for NPDP for conducting exercises. The WPDN, working with the other regions and the NPDP Exercise Committee has conducted forty-two exercises in 44 states and two US territories. Nine states and one territory have completed two exercises, and one state has completed three. Two states have conducted First Detector Exercises.

The WPDN IT has completed implementation of a security improvement plan for the regional hub's physical and network security. These improvements address all the security issues from the initial NPDP security audit. In addition to improving the functionality and security of the existing regional system WPDN IT has been leading the development of the next generation of the national database.



The WPDN Regional Group has over 40 regular members who coordinate the western region's activities by monthly conference calls and annual meetings. The annual meetings are accompanied by an agricultural tour of the area. Pictured here is the tour themed "Invasives" during 2006 meeting at Kilauea Military Camp on the island of Hawaii.

